
Fibertec™ 1023 System E Spare Parts Manual

1000 4863 / Rev. 2



Information may be changed or updated without notice. The latest version is found at www.foss.dk.

Rev.	Date of Issue	Revised Material
2	2006-08-07	Layout improved. Spare parts updated.

NOTE: Please note that all information is liable to change without prior notice.

Please inform Market Communication Dpt - Technical Communication Team at the address given below, if you have any opinions about or proposals for changes to this manual.

Market Communication Dpt - Technical Communication Team

e-mail tig@foss.dk

FOSS Analytical AB, Box 70, SE-263 21 Höganäs, Sweden

Tel Int +46 42 361500, Fax +46 42 340349

Table of Contents

1	General	1
2	Filtration Module	2
2.1	Spare Parts	2
2.2	Parts Illustration	3
3	Valve Plate	4
3.1	Spare Parts	4
3.2	Parts Illustration	5
4	Valve	6
4.1	Spare Parts	6
4.2	Parts Illustration	7
5	Trough	8
5.1	Spare Parts	8
5.2	Parts Illustration	9
6	Beam	10
6.1	Spare Parts	10
6.2	Parts Illustration	11

1 General

This document contains Spare Parts for Fibertec™ 1023 System E.

Note

Please read Safety Precautions in the Service Manual prior to maintenance or exchange of spare parts.

Note

Screws, nuts and washers are shown but not designated in this manual.

2 Filtration Module

Original Drawing	1000 2100
-------------------------	-----------

2.1 Spare Parts

Pos.	Part No.	Description	Note
1	1582 0027	Tubing 2/4	
2	1000 2126	Nipple	
3	1000 3381	Crucible holder	
4	1000 2129	Hinge axle	
5	1569 0011	Anchor	
6	1569 0010	Plastic strap	
7	1000 1228	Glass manifold	
8	1582 0204	Tubing 6/12, EPDM	
9	1000 2127	Hinge	
11	1000 2147	Beam cpl	See page 10
12	1000 2113	Cover plate	
13	1001 3566	Rear plate	
14	1546 0006	Locking screw	
15	1565 0009	Main cable	
16	1001 3561	Gable right	
17	1000 2140	Trough cpl	See page 8
18	1000 2103	Drip pan	
19	1000 2102	Label	
20	1000 2108	Flask holder	
21	1000 2109	Spring	
22	1000 2112	Support	
23	1000 2111	Inner plate	
24	1000 2130	Valve plate cpl	See page 4
25	1001 3560	Gable left	
26	1561 0006	Lug, red	
27	1561 0036	Flat pin connector	
28	1000 2124	Angle	

2.2 Parts Illustration

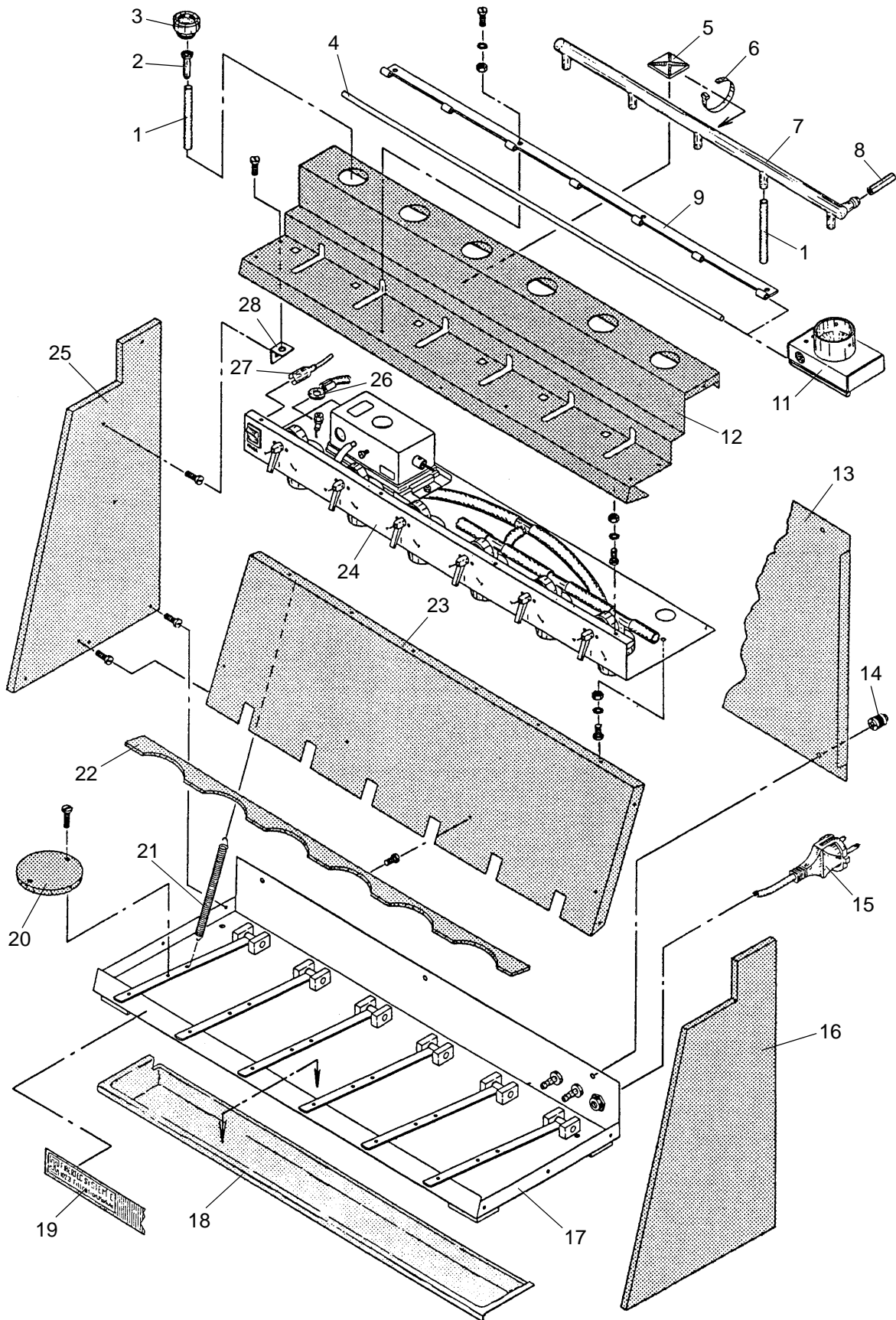


Fig. 1 Filtration module

3 Valve Plate

Original Drawing	1000 2130
-------------------------	-----------

3.1 Spare Parts

Pos.	Part No.	Description	Note
1	1000 2114	Valve plate	
2	1577 0008	Air pump	
3	1561 0045	Earth label	
6	1000 2222	Pump holder	
7	1544 0014	Vibration damper	
8	1569 0011	Anchor	
9	1569 0010	Plastic strap	
10	1000 2120	Valve cpl	See page 6
12	1000 2146	Handle	
13	1582 0023	Tubing 6/12	
14	1581 0006	T-piece	
16	1000 2115	Tube adapter	
17	1000 2116	Nipple	
18	1582 0027	Tubing 2/4	
19	1581 0055	T-piece	
20	1561 0036	Flat pin connector	
21	1563 0001	Switch	
22	1584 0009	Non return valve	

3.2 Parts Illustration

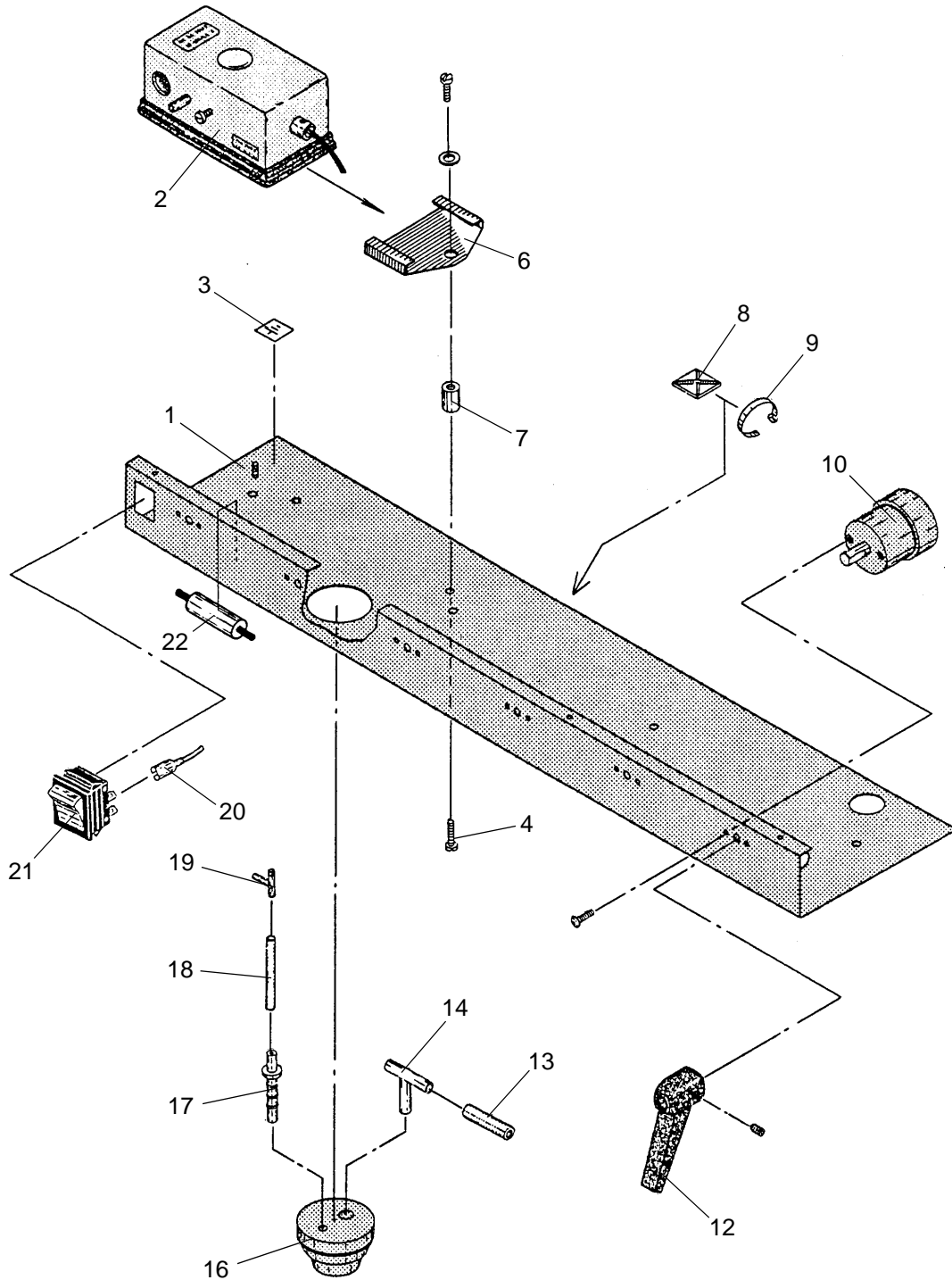


Fig. 2 Valve plate

4 Valve

Original Drawing	1000 2120
-------------------------	-----------

4.1 Spare Parts

Pos.	Part No.	Description	Note
1	1000 2119	Valve house	
2	1000 2122	Shaft	
3	1000 2123	Spring	
5	1000 2118	Valve	
6	1539 0043	Cylindrical pin	
7	1539 0042	Cylindrical pin	
8	1000 2117	Connection block	
9	1000 2139	Nipple	
10	1542 0007	O-ring	
11	1542 0036	O-ring	
12	1000 2121	Valve cover	

4.2 Parts Illustration

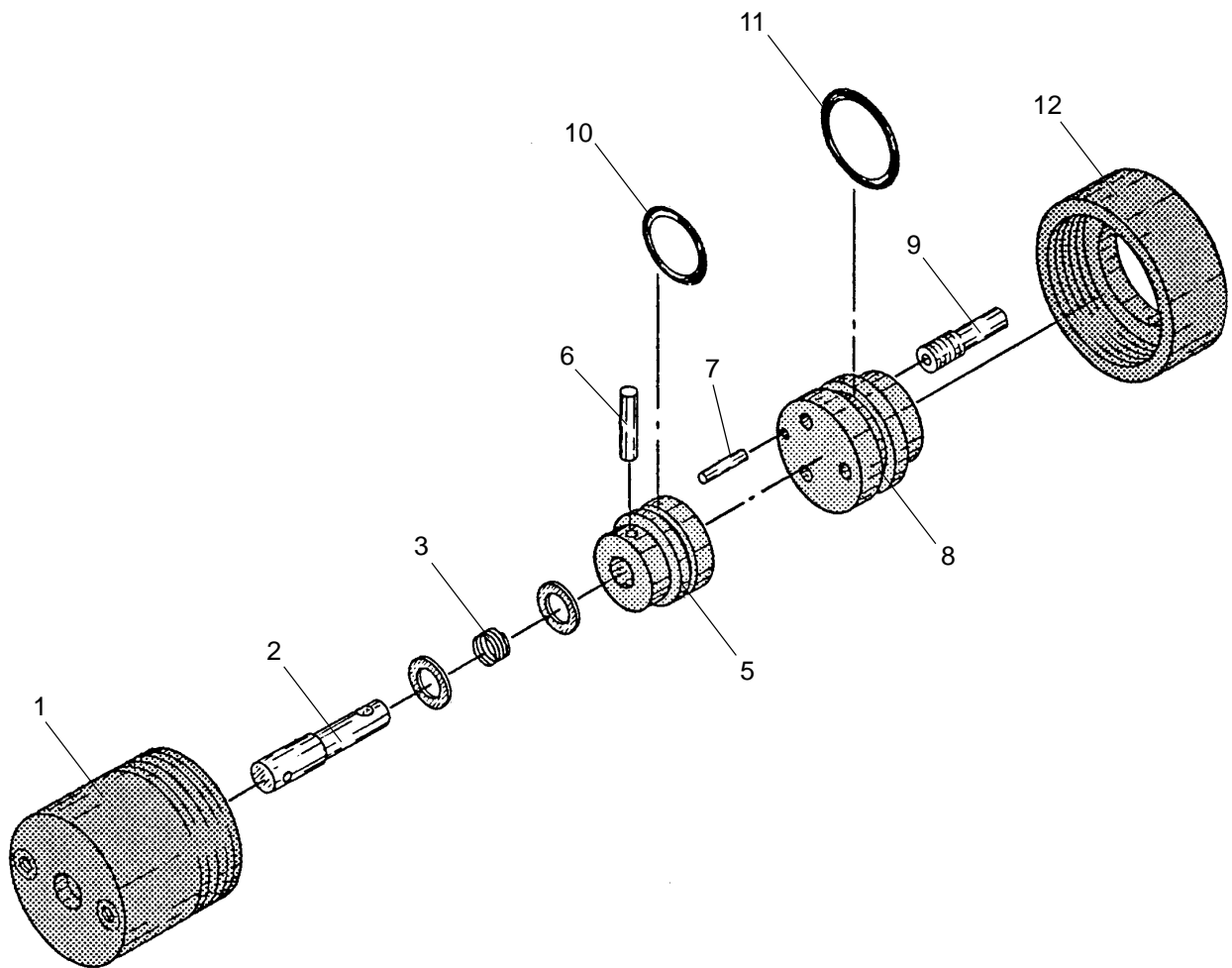


Fig. 3 Valve

5 Trough

Original Drawing	1000 2140
-------------------------	-----------

5.1 Spare Parts

Pos.	Part No.	Description	Note
1	1000 2101	Trough	
4	1000 2107	Bar	
5	1000 2106	Block	
6	1542 0004	O-ring	
8	1561 0001	Compression gland	
11	1000 1012	Nipple	
13	1547 0001	Support	

5.2 Parts Illustration

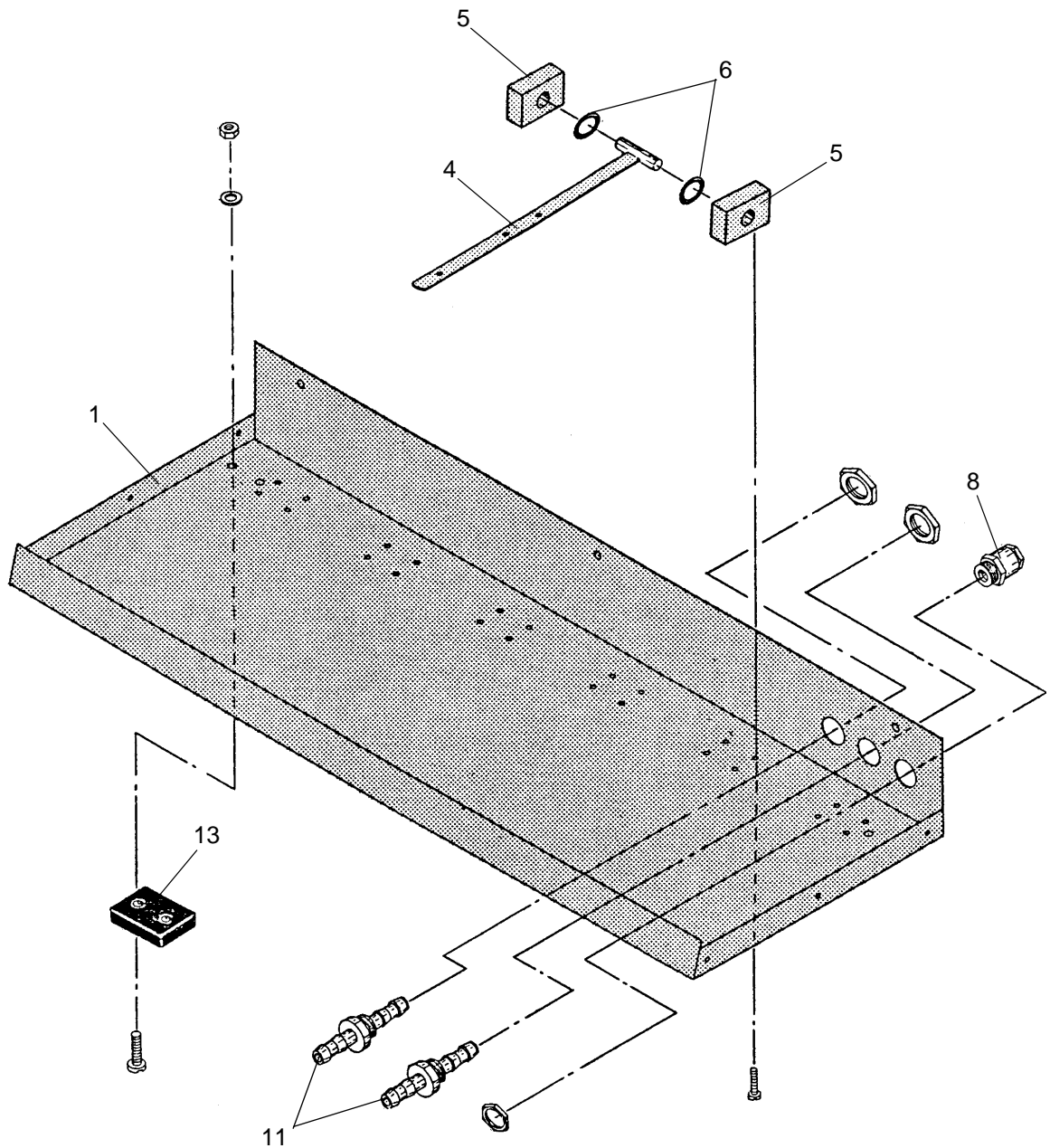


Fig. 4 Trough

6 Beam

Original Drawing	1000 2147
-------------------------	-----------

6.1 Spare Parts

Pos.	Part No.	Description	Note
1	1000 2141	Crucible seal	
2	1000 2132	Crucible base	
3	1000 2133	Nib	
4	1000 2131	Beam	
5	1000 2138	Cover	
6	1549 0018	Rubber plug	
7	1000 2128	Hinge	
10	1000 2137	Knob	
11	1000 2135	Axle	
12	1000 2134	Bracket	
13	1000 2136	Click spring	

6.2 Parts Illustration

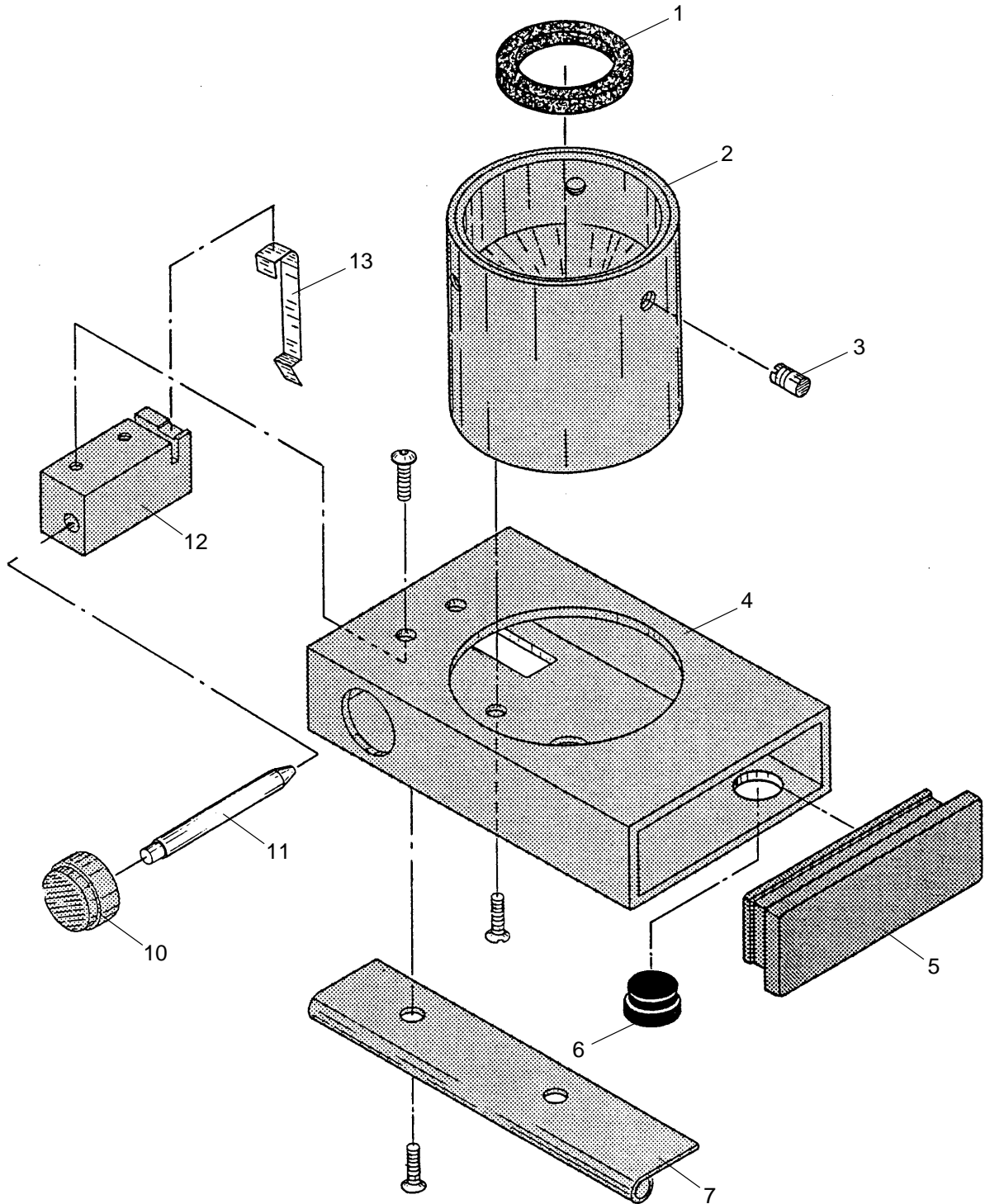


Fig. 5 Beam

